



Dome loaded pressure regulator LTD-2

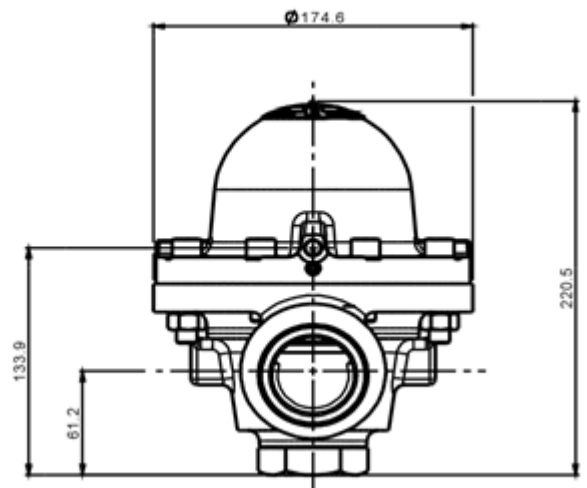
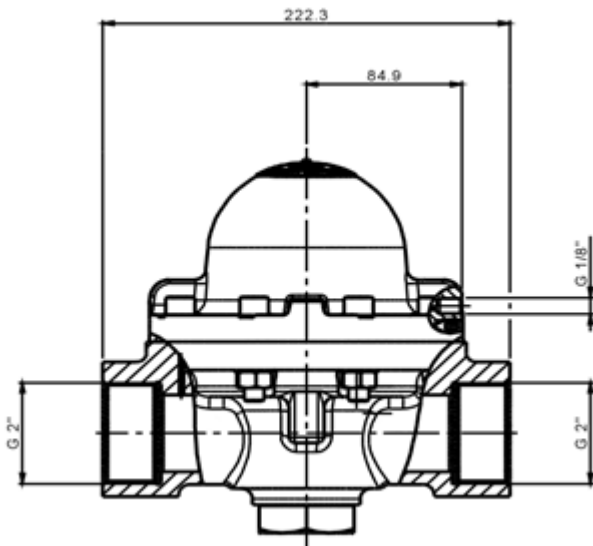
Precise and instantaneous pressure control
without "wobbling" even with large variations

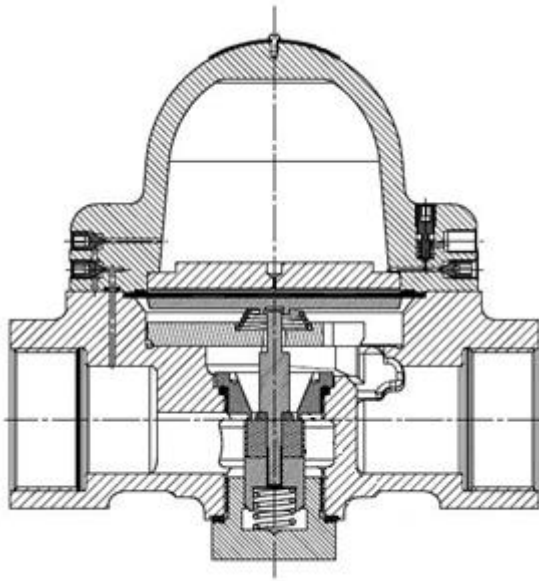


- For almost all technical gases, air and liquids
- Broad performance: 10 .. 5.000 Nm³/h
- Inlet 0.5 .. 69 bar
Outlet 0.1 .. 65 bar
- Sealing material:
EPDM seals and diaphragm
- Standard temperature range: -20 .. 70°C
- Weight:
 - Aluminium alloy 6.4 Kg
 - Aluminium-Bronze 14.5 Kg
- Flow coefficient
Cv=8.0
Kv=8.3

Conversion factors:

- Hydrogen:	3.80
- Methane:	1.35
- Propane:	0.80
- Carbon dioxide:	0.85
- Nitrogen:	1.00
- Argon:	0.85
- Helium:	2.70





- Installation length approx. 222 mm, height approx. 220 mm
- Connection inlet and outlet:
G 2" RH – female
Optional screw-in flange DN50 PN40
- Safety function: closed by spring force and positive tightening
- Including Test Report acc. EN 10204
- Materials:
 - Aluminium-Bronze
 - Aluminium alloy

Also available as:

- Pressure Control System with
 - Inlet and outlet stop valve
 - Bypass
 - Pressure gauge (inlet pressure and/or outlet pressure)
as well as pressure transmitter
 - Control by pilot pressure controller
as well with external recirculation
 - Safety valve
 - Gas filter
 - Mounted on wall console or rack,
as well with roof
- Dome loaded pressure control unit with
 - Control by pilot pressure controller
as well with external recirculation
 - Pressure gauge (inlet pressure
and/or outlet pressure)



High performance pressure control: Quick, precise and stable !

LT GASETECHNIK

beyond standards

Martener Str. 535 – 44379 Dortmund – Germany

Tel +49 231 / 96 10 70-0

Fax +49 231 / 61 38 44

mail@lt-gasetechnik.com

www.lt-gasetechnik.com

October 2017