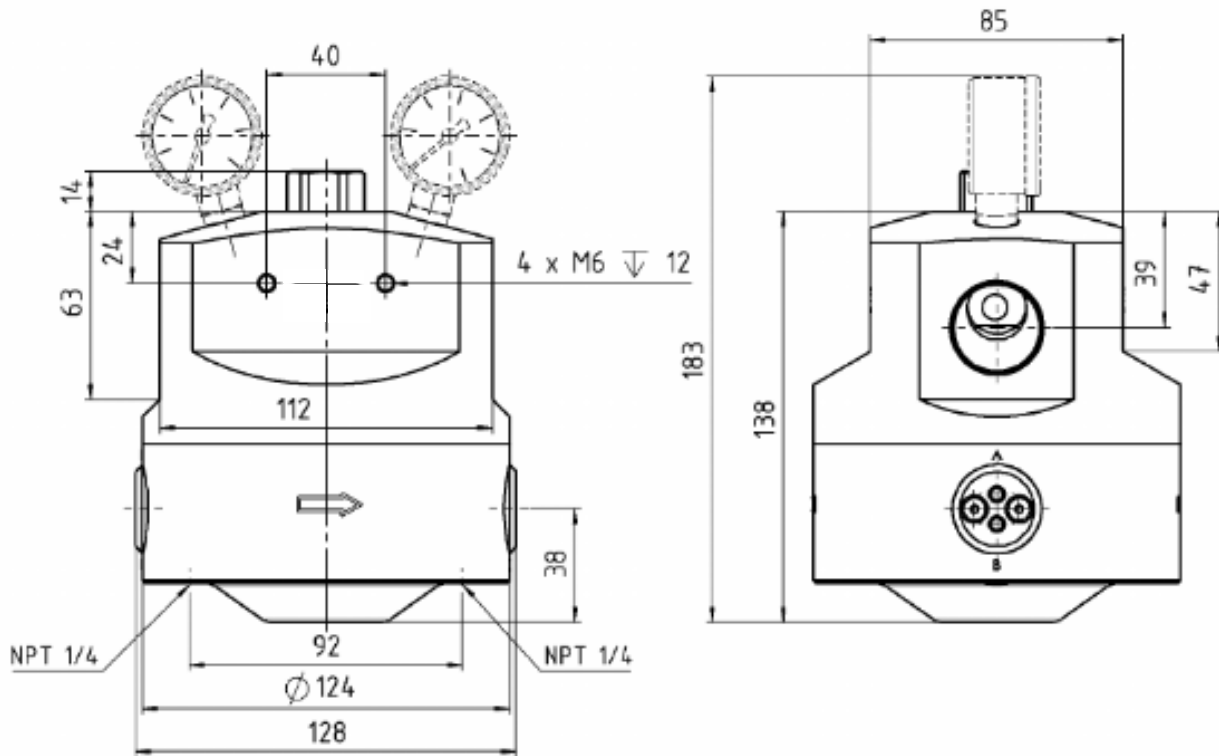


# Data sheet

## dome loaded pressure controller LTD-1 HD



Item numbers: 5002670

- Available materials: brass or stainless steel (1.4404)
- Sealing materials:  
EPDM or FKM for O-rings and membrane
- Suitable for almost all technical gases, air and liquids
- Maximum inlet pressure      up to 320 bar brass  
   up to 420 bar stainless steel
- Control range                    up to 300 bar brass  
   up to 400 bar stainless steel
- Flow coefficient  $C_v = 3.0$
- Standard temperature range:  $-40 + 150 \text{ } ^\circ \text{C}$
- Weight: approx. 9.3 kg
- Installation length approx. 128 mm, height approx. 183 mm
- Connection inlet and outlet: internal thread G1 "RH

The dome loaded pressure controller LTD-1 HD is a pneumatically controlled, single-stage pressure regulator that was developed for use with compressed gases and gas mixtures. Permissible gases are all technical gases except acetylene.

We recommend a fine filter upstream. If the pressure level changes, the downstream components must be protected by safety valve(s)

The dome pressure can be derived from the upstream pressure side through needle valves.

A pilot valve or a proportional valve can be used for convenient adjustment. Further details in the operating instructions.

#### Optionally available with

- Fine filter
- Factory certificate according to EN 10204 (item no. 6220000)
- Pressure gauges for inlet pressure and outlet pressure, also as a pressure transmitter
- Pressure control unit controlled by a pilot pressure regulator, also with external back pressure feedback

